

- Flexible coupling for universal usage
- Machined from a single-piece
- Vibration absorbing



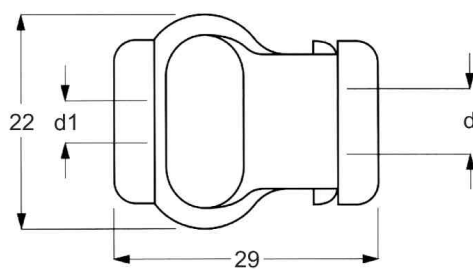
PAN



www.lika.biz
• Data-sheet

SPECIFICATIONS

Series	Bore diameter d - d1 (mm)	Max. torque (Nm)	Max. rotational freq. (rpm)	Moment of inertia (gcm ²)	Static torsional stiffness (Nm/rad)	Max. error of eccentricity (mm)	Max. error of angularity (°)	Max error of shaft-end-play (mm)	Mass (g)
PAN 6	6 - 6	0,6	8000	6,7	9	±0,25	±3,5	±0,4	13
PAN 8	8 - 8	1	8000	22	20	±0,3	±4	±0,5	26
PAN 10	10 - 10	1	8000	22	20	±0,3	±4	±0,5	26
PAN 12	12 - 12	1	8000	22	20	±0,3	±4	±0,5	26



- Metal hubs & polymer element
- High misalignments allowed
- Electrical shaft insulation



PGF



www.lika.biz
• Data-sheet

SPECIFICATIONS

Series	Bore diameter d - d1 (mm)	Max. torque (Nm)	Max. rotational freq. (rpm)	Moment of inertia (gcm ²)	Static torsional stiffness (Nm/rad)	Max. error of eccentricity (mm)	Max. error of angularity (°)	Max error of shaft-end-play (mm)	Mass (g)
PGF 6	6 - 6	0,5	3000	10	3,2	±2,5	±6	±4,5	20
PGF 8	8 - 8	0,5	3000	10	3,2	±2,5	±6	±4,5	20
PGF 10	10 - 10	0,5	3000	10	3,2	±2,5	±6	±4,5	20